

# Key Investor Information

This document provides you with key investor information about this fund. It is not marketing material. The information is required by law to help you understand the nature and the risks of investing in this fund. You are advised to read it so you can make an informed decision about whether to invest.



TBFS

## TB Wise Multi-Asset Income A Inc

TB Wise Multi-Asset Income, a sub-fund of the TB Wise Funds A Income, ISIN: GB00B0LHRT77  
The Authorised Corporate Director of this Fund is: T. Bailey Fund Services Limited.

### Objectives and investment policy

The investment objective of the Fund is to provide an annual yield\* in excess of the Cboe UK All Companies Index with the potential to provide income and capital growth over Rolling Periods of 5 years in line with or in excess of the Consumer Price Index, in each case after charges.

\*yield being the amount of income that is paid out every year by an investment, expressed as a percentage of the value of the investment.

The Fund may have direct or indirect exposure to multiple asset classes including equities, fixed interest securities (government or corporate bonds), and indirect exposure to alternative asset classes, such as infrastructure, clean energy, commodities, property and private equity. Indirect exposure will be obtained through investments in closed-ended collective investment funds (such as investment trusts and REITs) and open-ended collective investment schemes (such as unit trusts, OEICs and ETFs), which may include those managed by the ACD and its associates (together 'collective investment vehicles').

The Fund may also invest directly in money market instruments, deposits, cash and near cash. The Fund's portfolio will be diversified by reference to various factors such as industry, geography or asset class, although there is no restriction on allocations between different factors. The Investment Manager may also, where it considers appropriate, manage the portfolio on a more concentrated basis by holding fewer than 30 holdings. This could be, for example, where the Investment Manager decides to increase its backing of certain managers, thus reducing the tail of holdings, or during adverse market conditions where the Investment Manager may consider it in the best interests of Shareholders to allocate a greater proportion of the portfolio to cash.

The Fund may use derivatives to reduce risk or cost or to generate additional capital or income at proportionate risk (known as "Efficient Portfolio Management"). It is intended that the use of derivatives will be limited.

The Fund is actively managed. The Investment Manager aims to construct a portfolio of "best-in-class" collective investment vehicles and companies that demonstrate a commitment and ability to deliver consistent income, in asset classes that it expects to benefit from favourable market conditions, and at valuations which the Investment Manager considers are attractive at the point of purchase.

This approach is research-intensive, and involves consideration of many factors in relation to both the wider economic environment and individual holdings. By focusing both on direct and indirect investments, research on each element of the portfolio benefits the other.

The Investment Manager is purposely using a broad investment universe as it offers the best opportunity in seeking to achieve the Fund's objectives in an ever-changing world.

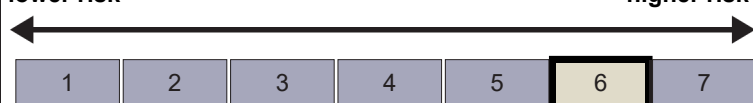
Investors can redeem units on demand, at the daily valuation point of 12 noon (UK time) when this is a normal business day in the UK. For income units, any income received is paid out to you monthly. For accumulation units, any income received is reflected in the price of units. Recommendation: this fund may not be appropriate for investors who plan to withdraw their money in the short-term (within 5 years). The Fund should be viewed as a medium to long-term investment only.

### Risk and reward profile

The Risk and Reward Indicator table demonstrates where the Fund ranks in terms of its potential risk and reward. The higher the rank the greater the potential reward but the greater the risk of losing money. It is based on past data, may change over time and may not be a reliable indication of the future risk profile of the Fund. The shaded area in the table below shows the Fund's ranking on the Risk and Reward Indicator.

Typically lower rewards,  
lower risk

Typically higher rewards,  
higher risk



- The Fund is in the above risk category because it invests in a variety of asset classes, but with a bias towards shares.
- A limited number of investments may be held which has the potential to increase the volatility of performance.
- The lowest category does not mean a fund is a risk free investment.
- The value of investments may go down as well as up in response to general market conditions and the performance of the assets held. Investors may not get back the money which they invested.
- There is no guarantee that the Fund will meet its stated objectives and where there is more than one objective there may be periods where not all of the objectives are being met.
- The Fund invests in global shares, with some regions being regarded as more risky. The movements of exchange rates may lead to further changes in the value of investments and the income from them.
- Whilst the intention of using derivatives is to reduce risk, this outcome is not guaranteed and derivatives involve additional risks which could lead to losses.
- There is a risk that any company providing services such as safe keeping of assets or acting as counterparty to derivatives may become insolvent, which may cause losses to the Fund



## Charges

The charges you pay are used to pay the costs of running the Fund, including the costs of marketing and distributing it. These charges reduce the potential growth of your investment.

### One-off charges taken before or after you invest

Entry charge	0.00%
Exit charge	0.00%

These are the maximum charges that we might take out of your money before it is invested and before we pay out the sale proceeds of your investment. In some cases, you might pay less and you should speak to your financial adviser about this.

### Charges taken from the Fund over a year

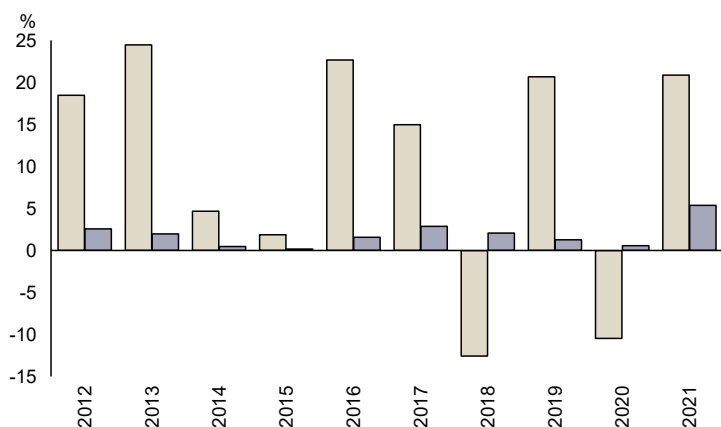
Ongoing charges	1.61%
-----------------	-------

### Charges taken from the Fund under specific conditions

Performance fee	No
-----------------	----

- The ongoing charges figure is based on the expenses incurred by the Fund for the year ended 28 February 2022.
- The figure may vary from year to year. The figure includes the weighted average ongoing charges figure of the funds invested in. It excludes payments related to interest on borrowing and portfolio transaction costs, except in the case of transaction fees payable to the custodian and any entry/ exit charge paid when buying or selling units in another fund.
- Ongoing charges are deducted from capital which will assist the income yield but may constrain capital growth.
- For details of the actual charges, please contact your financial adviser/distributor.

## Past performance



	2012	2013	2014	2015	2016	2017	2018	2019	2020	2021
Fund	18.5	24.5	4.7	1.9	22.7	15.0	-12.6	20.7	-10.5	20.9
Index*	2.6	2.0	0.5	0.2	1.6	2.9	2.1	1.3	0.6	5.4

Source: FE fundinfo 2022

- You should be aware that past performance is not a guide to future performance.
- Fund launch date: 03/10/2005.
- Share/unit class launch date: 03/10/2005.
- Performance is calculated in GBP.
- Performance is shown inclusive of all charges, except entry charges.
- Performance is shown on a total return basis (on the basis that distributable income has been reinvested).
- \* UK Consumer Price Index

## Practical information

- Further information about the Fund including the Prospectus, Supplementary Information document, latest annual and half-yearly reports is available free of charge at [www.tbaileyfs.co.uk](http://www.tbaileyfs.co.uk). All documents are available in English only.
- This Key Investor Information is prepared for TB Wise Multi-Asset Income, a compartment of the TB Wise Funds, a UCITS. The Prospectus and periodic reports referred to above are prepared for the entire UCITS.
- Latest prices are published at [www.tbaileyfs.co.uk](http://www.tbaileyfs.co.uk).
- Each compartment is a segregated portfolio of assets and those assets can only be used to meet the liabilities of, or claims against, that compartment.
- The depository of the Fund is NatWest Trustee and Depository Services Limited.
- T. Bailey Fund Services Limited may be held liable solely on the basis of any statement contained in this document that is misleading, inaccurate or inconsistent with the relevant parts of the Prospectus for the Fund.
- Details of the up to date remuneration policy which includes a description of how remuneration and benefits are calculated and the identities of the persons responsible for awarding remuneration and benefits, are available at [www.tbaileyfs.co.uk](http://www.tbaileyfs.co.uk) and a paper copy will be available free of charge upon request.
- Other share classes are available in this fund (A Accumulation, B Accumulation, A Income & B Income) please see separate Key Investor Information document(s) for details. Investors have the right to request a switch to other share classes of this fund or to another fund in the TB Wise Funds – see Prospectus for more details.
- The Fund is authorised in the UK and is regulated by the Financial Conduct Authority.
- T. Bailey Fund Services Limited is authorised in the UK and is regulated by the Financial Conduct Authority.