

## KEY INVESTOR INFORMATION

This document provides you with key investor information about this fund. It is not marketing material. The information is required by law to help you understand the nature and the risks of investing in this fund. You are advised to read it so you can make an informed decision about whether to invest.

### TB Wise Multi-Asset Growth, a sub-fund of the TB Wise Investment Funds A Accumulation, ISIN: GB0034272426

The Authorised Corporate Director of this Fund is: T. Bailey Fund Services Limited.

#### Objectives and Investment Policy

The investment objective of TB Wise Multi-Asset Growth is to provide growth over the medium to long term in excess of the Cboe UK All Companies Index and in line with, or better than, the rate of UK inflation (based on the Bank of England's preferred measure of UK inflation, which is currently the Consumer Prices Index (CPI)). Investors should note that their capital is at risk and that there is no guarantee that a positive return will be achieved over any time period.

The fund will have exposure to multiple asset classes. The fund will invest in a diversified portfolio which may include collective investment schemes, equities (shares) including investment trusts, bonds, Government securities, money market instruments, deposits and cash.

The fund may also invest in derivatives for the purpose of efficient portfolio management from time to time (e.g. options, with the intention of reducing market risk or currency forwards, with the intention of reducing currency risk).

There will be no restriction on allocations between asset classes or geographic regions.

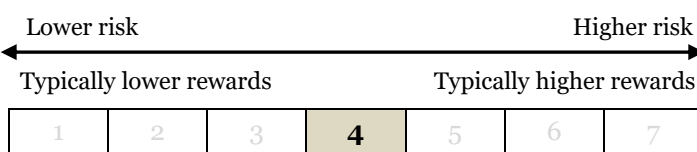
Investors can redeem units on demand, at the daily valuation point of 12 noon (UK time) when this is a normal business day in the UK.

The Fund is not managed to generate an income. Any income arising from the Fund is reinvested. In other words all units are accumulation units.

Recommendation: this fund may not be appropriate for investors who plan to withdraw their money in the short-term (within 5 years). The Fund should be viewed as a medium to long-term investment only.

#### Risk and Reward Profile

The Risk and Reward Indicator below demonstrates in a standard format where the Fund ranks in terms of its potential risk and reward. It is based on historical performance data, may change over time and may not be a reliable indication of the future risk profile of the Fund. The shaded area in the table below shows the Fund's ranking. The higher the rank the greater the potential reward but the greater the risk of losing money.



- The Fund is in the above risk category because it invests in a variety of asset classes, but with a bias towards shares.
- The lowest category does not mean a fund is a risk free investment.
- The value of investments may go down as well as up in response to general market conditions and the performance of the assets held. Investors may not get back the money which they invested.
- There is no guarantee that the Fund will meet its stated objectives.
- The Fund invests in global shares, with some regions being regarded as more risky. The movements of exchange rates may lead to further changes in the value of investments and the income from them.
- Whilst the intention of using derivatives is to reduce risk, this outcome is not guaranteed and derivatives involve additional risks which could lead to losses.
- There is a risk that any company providing services such as safe keeping of assets or acting as counterparty to derivatives may become insolvent, which may cause losses to the Fund.

## Charges

The charges you pay are used to pay the costs of running the Fund, including the costs of marketing and distributing it. These charges reduce the potential growth of your investment.

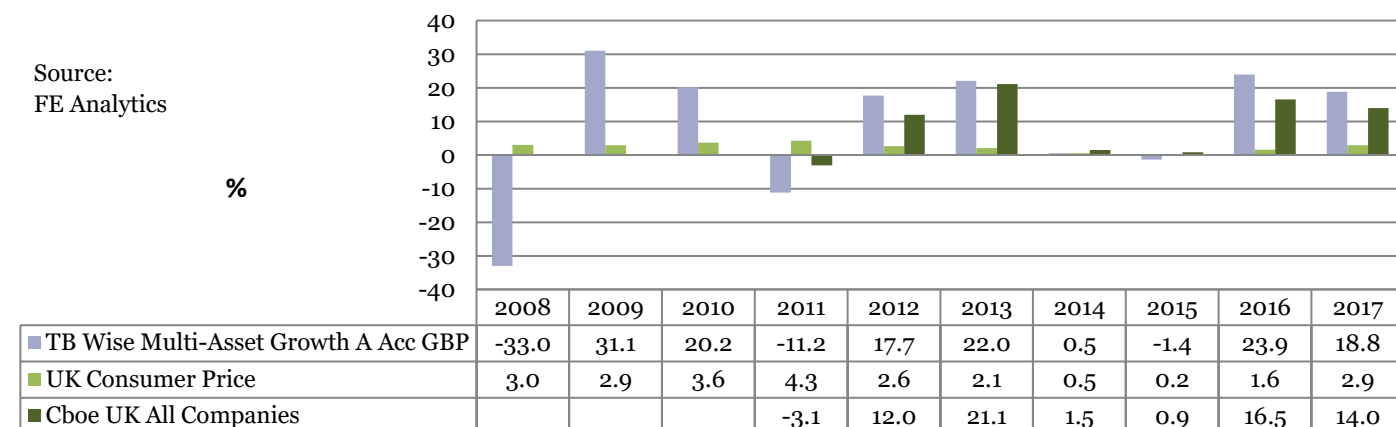
One-off charges taken before or after you invest	
<b>Entry charge</b>	nil
<b>Exit charge</b>	nil
This is the maximum that might be taken out of your money before it is invested/ before the proceeds of your investment are paid out.	
Charges taken from the Fund over a year	
<b>Ongoing charges</b>	1.85%
Charges taken from the Fund under specific conditions	
<b>Performance fee</b>	nil

The **ongoing charges** figure is based on the expenses incurred by the Fund for the year ended 28 February 2018.

The figure may vary from year to year. The figure includes the weighted average ongoing charges figure of the funds invested in. It excludes payments related to interest on borrowing and portfolio transaction costs, except in the case of transaction fees payable to the custodian and any entry/ exit charge paid when buying or selling units in another fund.

For details of the actual charges, please contact your financial adviser/distributor.

## Past Performance (Fund launch date 1 April 2004)



- The Past Performance chart shows annual performance, in GBP, for each of the last 10 calendar years.
- The Cboe UK All Companies Index launched in September 2010 so data is unavailable for calendar years prior to 2011.
- Past performance is not a reliable indicator of future results.
- Performance is shown inclusive of all charges.
- Performance is shown on a total return basis (on the basis that distributable income has been reinvested).

## Practical Information

- Further information about the Fund including the Prospectus, Supplementary Information document, latest annual and half-yearly reports is available free of charge at [www.tbaileyfs.co.uk](http://www.tbaileyfs.co.uk). All documents are available in English only.
- This Key Investor Information is prepared for TB Wise Multi-Asset Growth, a compartment of the TB Wise Investment Funds, a UCITS. The Prospectus and periodic reports referred to above are prepared for the entire UCITS.
- Each compartment is a segregated portfolio of assets and those assets can only be used to meet the liabilities of, or claims against, that compartment.
- Latest prices are published at [www.fundlistings.com](http://www.fundlistings.com).
- The Fund's home Member State is the UK and this may have an impact on the personal tax position of the investor. Please seek professional advice from your Financial Adviser if you are unsure.
- The depositary of the Fund is National Westminster Bank plc.
- T. Bailey Fund Services Limited may be held liable solely on the basis of any statement contained in this document that is misleading, inaccurate or inconsistent with the relevant parts of the Prospectus for the Fund.
- Details of the up to date remuneration policy which includes a description of how remuneration and benefits are calculated and the identities of the persons responsible for awarding remuneration and benefits, are available at [www.tbaileyfs.co.uk](http://www.tbaileyfs.co.uk) and a paper copy will be available free of charge upon request.
- Another share class is available in this fund (B Accumulation) please see separate Key Investor Information document for details. Investors have the right to request a switch to the other share class of this fund or to another fund in the TB Wise Investment Funds – see Prospectus for more details.
- The Fund is authorised in the UK and is regulated by the Financial Conduct Authority.
- T. Bailey Fund Services Limited is authorised in the UK and is regulated by the Financial Conduct Authority.

This Key Investor Information is accurate as at **8 May 2018**.

## Authorised Corporate Director Contact Details

T. Bailey Fund Services Limited,  
64 St. James's Street,  
Nottingham, NG1 6FJ  
T: 0115 988 8258  
W: [www.tbaileyfs.co.uk](http://www.tbaileyfs.co.uk)